

Dino-Lite
IriScope



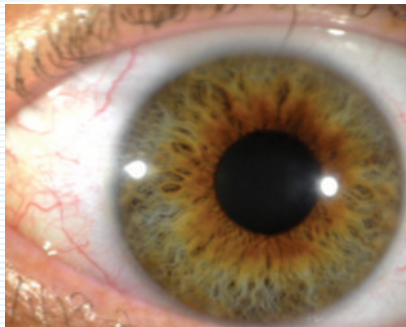
IriScope in use

Iridology with a Dino-Lite IriScope

The Dino-Lite IriScope allows you to easily create sharp images of eyes and irises. Because of the strong magnification you can see barely visible details. In Naturopathy, the IriScope is often used for iris diagnosis. Iridologists assess the health status of patients on the basis of color characteristics in the iris of the eye. According to iridologists they can diagnose conditions such as diabetes, rheumatism or gout by using iris diagnosis and treat the patient accordingly.

Camera made especially for iris photography

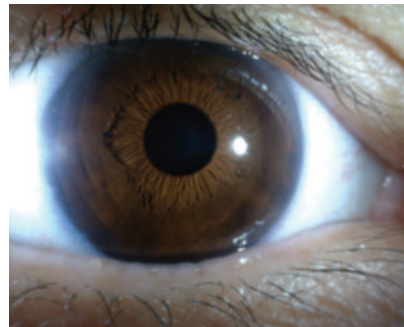
The contoured hood on the microscope camera ensures that the camera can be close to the eye. Because of the built-in LED lighting (two white and two yellow LEDs) you can easily create good images without the need of an external light source. The yellow LEDs are used to provide better images of dark irises. The practitioner can watch the iris image directly at the screen of a computer or laptop with Windows or MacOS or with a Windows tablet, which proves the versatility and mobility of the IriScope.



Patients direct involvement in the diagnosis

Naturopathic practitioner Frederike Otger from The Hague, The Netherlands, has been using the IriScope for some time: "It is a handy and simple microscope camera to make sharp images of eyes and irises. With the adjustable magnification I can focus properly on the eye and discover the smallest irregularities. Both my patients and myself find it very pleasant that the images can be viewed directly on the screen. In this way, the patient is more involved in the diagnosis and can also give better feedback".

For naturopathic practitioners the IriScope is affordable, compact and very easy to use. Images can be digitally stored in the patient file. Frederike Otger: "The combination with a tablet makes the IriScope a wonderful tool to emphasize the modern character of my naturopathic practice."



Dino-Lite IriScope

IriScope MEDL4R

The IriScope (MEDL4R) offers a new, fast and easy way to make pictures of eyes. The IriScope has 2x2 LED's (white/yellow) that illuminate the side of the eye which reduces the reflections in the image as well as the discomfort by bright light. The yellow LED's provide better images of dark irises. The images have a maximum resolution of 1.3 Megapixel.



usb 2.0



adjustable
~10 - 20x



2 + 2 UV leds
switchable



magnification
lock



1,3 megapixel
1280 x 1024

Dino-Lite Foot Pedal SW-F1

The Foot Pedal (SW-F1) allows you to take a picture with a simple step from your foot when using the Dino-Lite IriScope. No additional software is required, simply plug in the device and it is ready to use.



usb 2.0



plug and
play

Dino-Lite IriScope

The Dino-Lite IriScope is handy, easy to use and a valuable tool for every medical practice. You can make razor-sharp images of the iris with the magnification of 10-20 times that allows you to see details that can hardly be seen by the naked eye. Cases of irritation, dirt, insect or unknown object in the eye can be detected with the aid of the IriScope and allow the right diagnosis for further treatment.

IriScope pictures can have a resolution of up to 1.3 megapixel and the specially designed front cap can be placed on the eye socket to get the right distance for a perfect picture. The IriScope has its own built-in LED's with two different colours, white and yellow. The yellow LED's serve to allow images of darker irises. The LED's are powered by the direct USB connection which makes batteries superfluous and the IriScope always ready for action.

High mobility

A major advantage of the IriScope device is that patient and practitioner can look at the screen together, be it a regular computer screen, laptop or Windows tablet. This shows the high mobility of the Dino-Lite IriScope. It goes without saying that the images and video can be stored on any digital media. They can also be stored in a patient file to document the complaint or complaints over time. The IriScope is certified according to Medical Devices Regulation (EU) 2017/745. The Dino-Lite IriScope is supplied with dedicated software for Windows and MacOS.

Dino-Lite
Digital Microscope Medical

Dino-Lite medical products are class I medical devices according to the Medical Devices Regulation (EU) 2017/745

2020Q1 Copyright © 2020 IDCP BV

www.dino-lite.eu/medical
www.idcpmedtech.eu

IDCP
MEDTECH

IDCP B.V.
Manuscriptstraat 12-14
1321 NN Almere
The Netherlands

Telephone: +31 (0) 20 6186322

info@dino-lite.eu
info@idcpmedtech.eu